



MD REALTY
REAL ESTATE SERVICES

Contact Information:

Javier Velasquez
Leasing Agent
913.831.2996 ext 272
javier@mdmgt.com

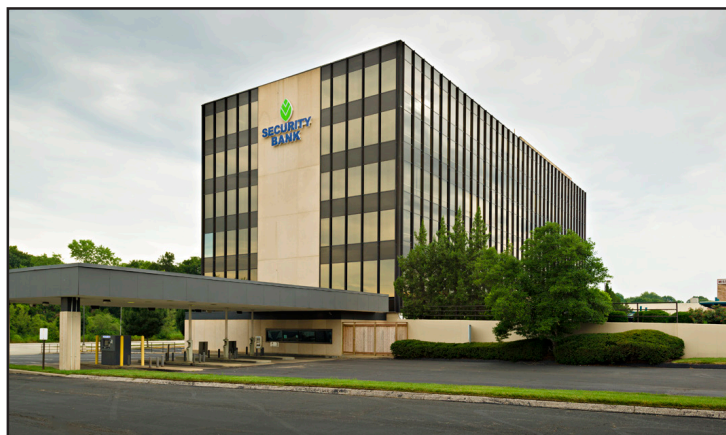
5201 Johnson Drive

Mission, KS



DEMOGRAPHICS: (5 MILE RADIUS)

Population	264,751
Households	119,760
Median Age	44
Ave. Income	\$59,919



PREMISES:

• Entire 1st Floor	13,800 SF +/-
• Suite 200	918 SF
• Suite 220	985 SF
• Suite 305	2,623 SF
• Suite 320	1,044 SF
• Suite 400	1,328 SF
• Suite 433	1,450 SF
• Suite 450	5,686 SF

PROPERTY HIGHLIGHTS:

- Newly renovated common areas; corridors, lobby, bathrooms
- Excellent visibility and access along Shawnee Mission Parkway and Johnson Drive
- Office suites available from 1,450 SF - 7,136 SF contiguous on the 4th floor



The information contained herein has been given to us from sources we deem reliable. We have no reason to doubt its accuracy but we do not guarantee it. Prices and availability subject to change at any time without prior notice.

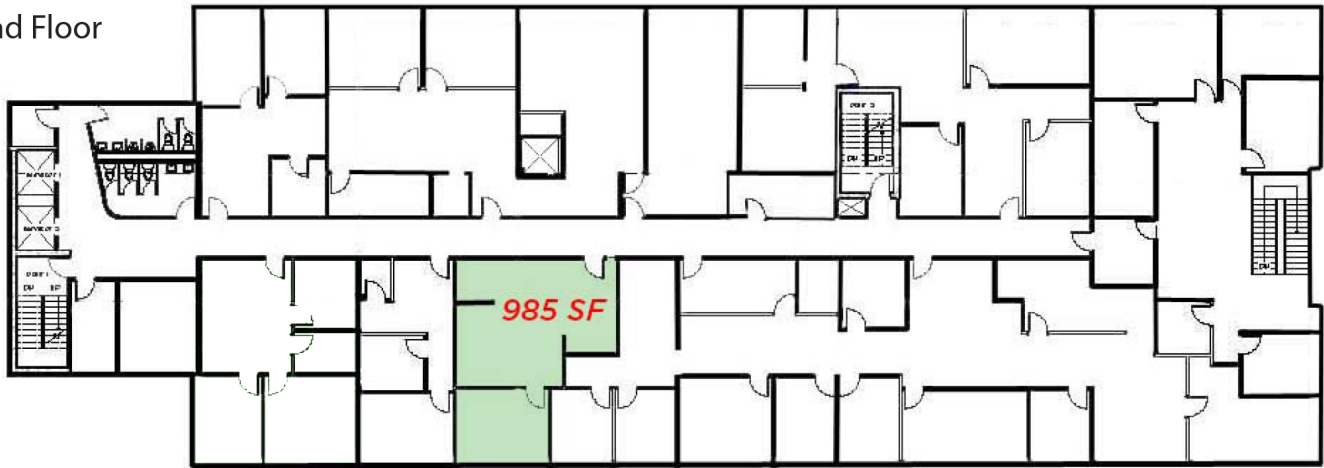
www.mdmgt.com

5201 Johnson Drive Mission, KS

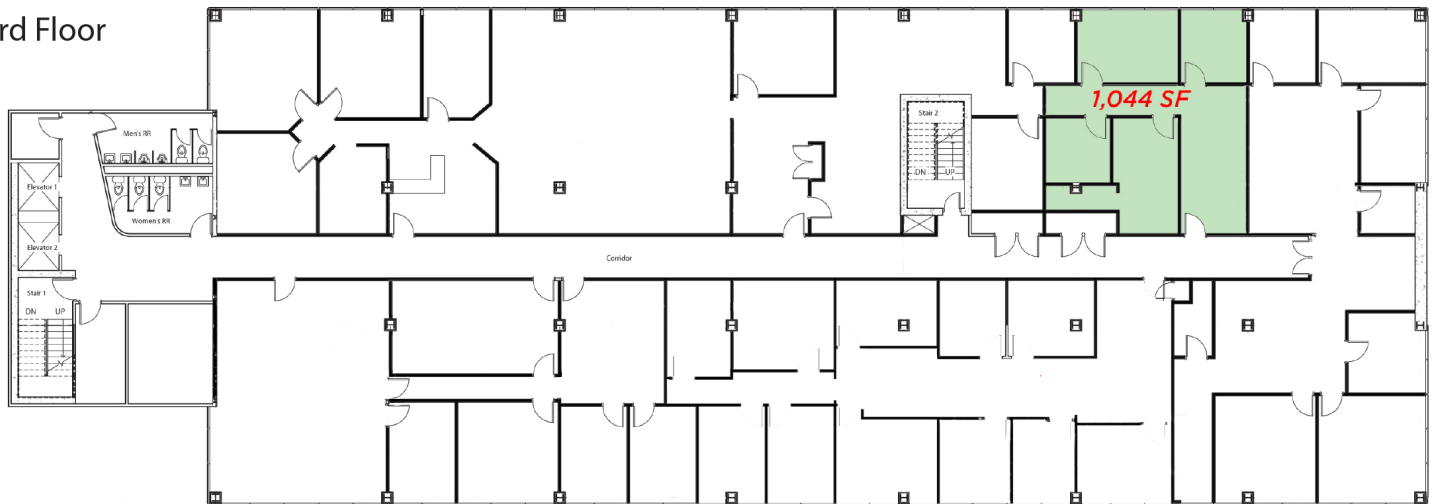
For Further Information
Contact:

Javier Velasquez
Leasing Agent
913.831.2996 ext 272
javier@mdmgt.com

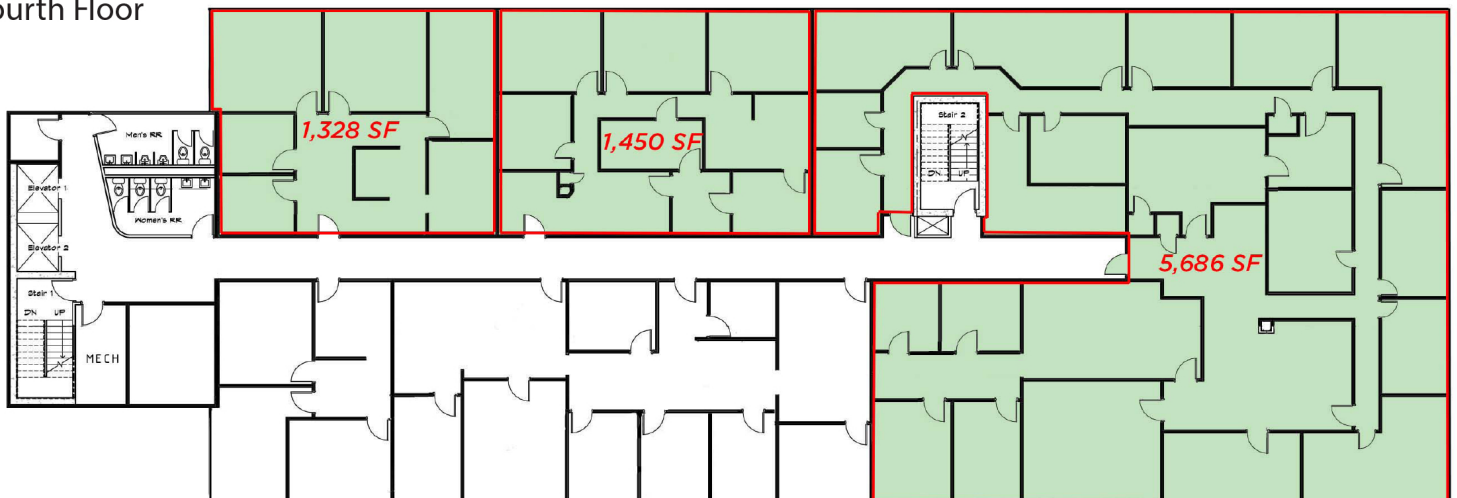
Second Floor



Third Floor



Fourth Floor



MD REALTY
REAL ESTATE SERVICES